



Canadian Stewardship
Services Alliance

Annual Steward Meeting

October 21, 2020





**Canadian Stewardship
Services Alliance**

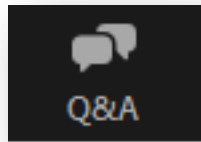
Welcome

**Calla Farn
Vice-President,
Corporate Affairs**



Webcast Information

- ① Main screen displays slides, videos and polls
- ② Current speaker will be on video
- ③ Submit your questions using the Q&A button in toggle bar



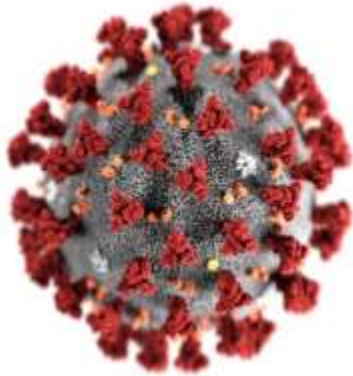
Technical issues? Send a note using the Q&A button

Today's Agenda

- CSSA Outlook
- CSSA Updates
- 2021 Budget and Fee Overview
- Program Updates, 2021 Budget and Fee Schedules:
 - Recycle BC
 - Multi-Material Stewardship Western (MMSW)
 - Multi-Material Stewardship Manitoba (MMSM)
 - Stewardship Ontario
- Q&A

cssalliance.ca/2020asm

Thank You...





Canadian Stewardship
Services Alliance

Maintaining Momentum Amid Disruption

John Coyne

CSSA Executive Chair



OUR
HOUSE
IS ON
FIRE!!

There is
NO
PLANET B

SYSTEM
CHANGE

NOT
CLIMATE
CHANGE!

EVIDENCE
OVER
IGNORANCE

CANADA

'People are innovative': Trudeau says restaurants can adapt to single-use plastics



By Katie Dangerfield • Global News

Global
NEWS

Ottawa to ban some single-use plastics, such as straws and grocery bags, next year

MARIEKE WALSH > AND KATHRYN BLAZE BAUM >

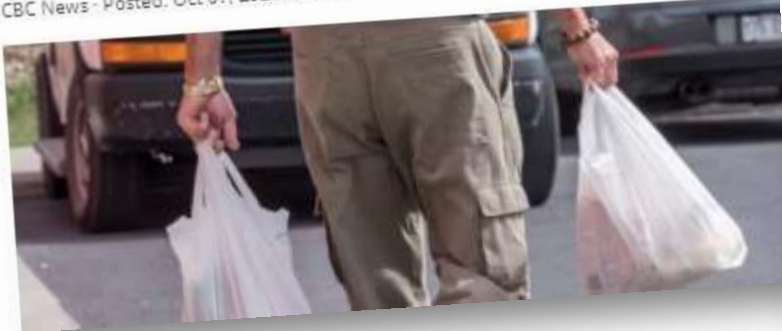
Politics

Liberals' 2021 single-use plastic ban includes grocery bags, takeout containers



Proposed ban was a campaign promise back in 2019

CBC News - Posted: Oct. 07, 2020 8:45 AM ET | Last Updated: October 7



EDMONTON JOURNAL

Single-use plastic ban could impact Alberta's ability to attract investment, industry group warns

Ashley Joannou

Oct 08, 2020 • Last Updated 7 days ago • 4 minute read



MONTREAL GAZETTE

News Opinion Sports Business Arts Life Driving Healthing The GrowthOp Podcasts

Local News

Canadians' support of single-use-plastics ban a casualty of COVID-19: survey

More than half of those polled felt it would be better to wait until the crisis was over before imposing new restrictions on plastics.



Innovative Product Design







Canadian Stewardship
Services Alliance

EPR Coast to Coast

David Pearce
CSSA Managing Director



EPR Coast to Coast

- COVID-19: pause in packaging EPR momentum
 - Provinces enhancing or introducing regulation
- Consumers and voters demanding action
- Municipal governments looking to reduce waste management costs
- Producers seeking clarity, efficiency and fairness
 - Commitments to reduce footprint
- CSSA focus on harmonization and standardization

Extended Producer Responsibility Key to Circular Economy

“EPR programs are recognized as one of the most effective mechanisms to support the creation of a circular economy. They improve recycling rates, reduce litter, and create the conditions to incent efficiency and reduce costs for end-of-life management”.

Canada-wide Action Plan on Zero Plastic Waste, 2019

EPR Coast to Coast: British Columbia

- 2019 program plan renewal included additions to services, collector payments, higher targets and material-specific recovery rates
- Regulation of single-use and packaging-like products
- Community bans, IC&I



EPR Coast to Coast: Alberta

- Municipalities leading push for EPR
- Recycling part of economic diversification strategy
- ACES study intended to inform design of EPR program
- Municipalities are seeking consultation on an EPR framework



EPR Coast to Coast: Saskatchewan and Manitoba

- Considering transition from transfer payments to full producer responsibility
- SK currently 75%
 - Payment model review
- MB currently 80%
 - Engaging with government



EPR Coast to Coast: Ontario

- Individual producer responsibility model initiated in August 2019
- Draft regulation released October 19 for consultation
 - Posted on the Registry
 - Identifies responsible producer, expands materials and services...
 - Final regulation expected in early January
- Producers will assume municipal program between 2023 - 2025



Stewardship Ontario

EPR Coast to Coast: Quebec

- February announcement and tabling of Bill 65 paves way to full producer responsibility
- Municipalities are expected to continue collection
- Producers to be responsible for sorting, processing and marketing materials
- New system and producer organization begins 2022; complete by 2025



EPR Coast to Coast: Atlantic Canada

- Support for harmonized regional approach
- **NB:** Expect release of draft EPR regulations in 2021
- **NS:** municipal led effort; urging province to act
- **PEI:** ready to align as other provinces move forward
- **NFLD:** accepts concept, concern about recycling infrastructure investments



Trends in EPR Policy

- Moving toward full producer responsibility framework
- Material specific performance targets
- Inclusion of single-use plastics and packaging-like products
- Requirements for public space recycling
- Regulators expressing an interest in the IC&I sector...eventually

Core Principles of Effective EPR

- **Full Responsibility**
 - Producers fully responsible both financially and operationally; autonomy to design a recycling system to achieve efficiency and environmental targets
- **Easy and Convenient Recycling for Residents**
 - Ensure recycling is easy and convenient for consumers with the same basket of goods collected everywhere
- **Level Playing Field with Suitable Enforcement**
 - A level playing field and appropriate enforcement against free-riders; support for small businesses
- **Materials Pay their Own Way**
 - Materials pay their own way in the recycling system with no cross-subsidization
- **Healthy Competition in Procurement of Services**
 - Healthy competition in the procurement of waste management/ environmental services

Roles of Key Players in EPR

- **Government**
 - Set clear policy objectives, establish regulatory frameworks, specify targets/outcomes, approve program plans, monitor progress and enforce compliance.
- **Municipalities**
 - May play a key role as the collection interface with residents, subject to their interest in staying in the game under EPR.
- **Business/Producers**
 - Take the lead on program design and implementation including developing standardized material lists and definitions, the standards to be met by service providers and setting producer fees.

Components of a Robust EPR Framework

- **Harmonization**
 - Harmonization of key elements with other provinces
- **Outcomes-Based**
 - Focus on outcomes-based regulations
- **Oversight**
 - Ensure adequate and competent resources to oversee program performance and effective enforcement
- **Time for Program Development**
 - Ensure adequate time for Program Plan development

CSSA and Effective EPR

- Widespread policy activity...
 - Circular economy and resource management
 - Evolving environmental and economic needs
- Advocating for effective approaches where governments are considering expansion of EPR
 - Access and post-consumer feedstock
- Value to producers from harmonized management, systems and processes

CSSA Updates

- 2020 Reporting Recap
- Policy Updates
- E-commerce Update



2020 Reporting Recap

- Reporting deadline extended to July 31
- Allowed submission of previous year's data
- January launch of upgraded WeRecycle Portal generated positive feedback
 - Modern look and navigation
 - Live chat with NSS
 - Steward input on future enhancements
- Thank you!

Policy Updates for 2021

- Extended 90-day grace period for payments ends December 31, 2020
 - Revert to 30 days per Penalty and Interest Policy beginning with invoices issued in January 2021
- Deduction and Exclusion Policy
 - Consultation on draft policy
 - Policy virtually identical to guidance in Guidebook
- Minor changes re: Adjustment Requests, Dispute Resolution, Membership Agreements and Rules

E-commerce Project Update

- Growing volume of material from “non-resident” e-commerce retailers
- Project considering potential regulatory/compliance solutions
- Research to understand scope/impact of problem
 - **Phase 1:** Global review of EPR strategies/tactics
 - **Phase 2:** Develop Canadian data and gather perspectives
 - **Phase 3:** Produce preliminary recommendations and draft policy options



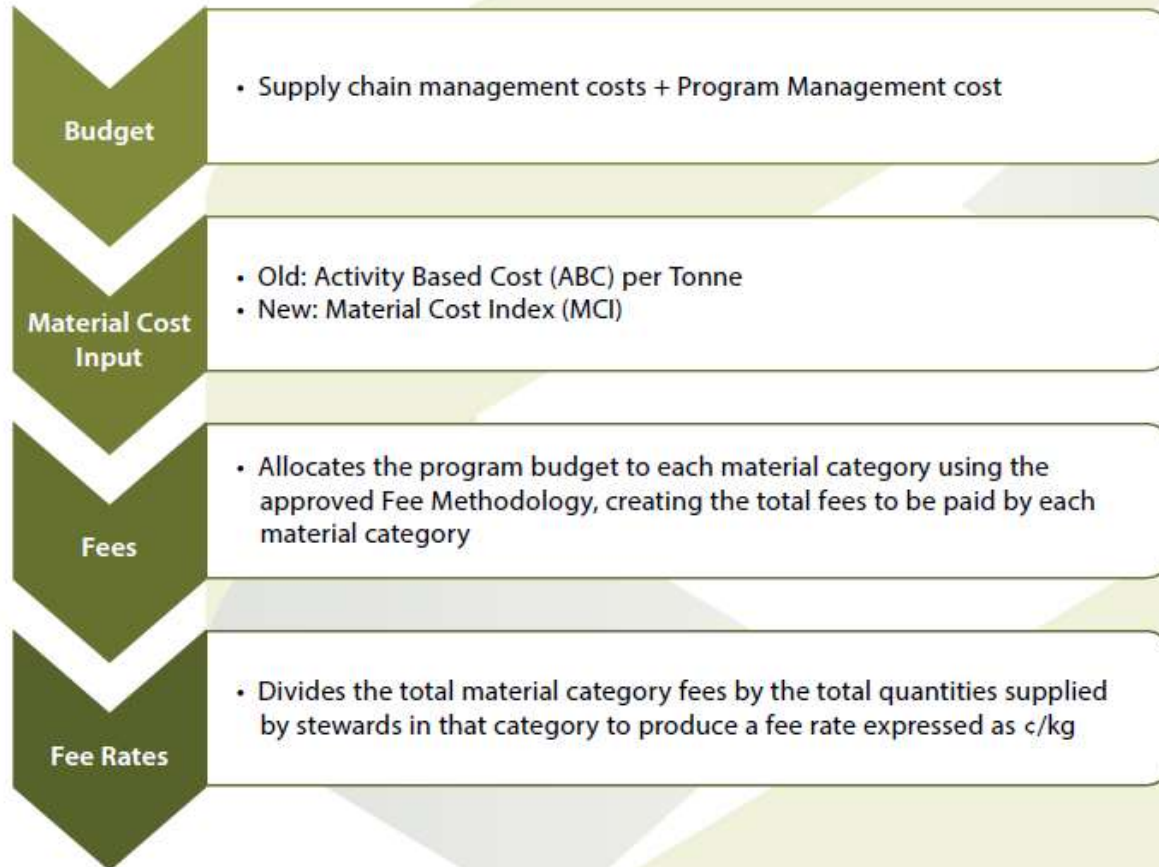
Canadian Stewardship
Services Alliance

2021 Budget and Fee Overview

Laurie Simpson
Vice-President Projects & CIO



Determining Fee Rates



Four-Step Fee Methodology

Processes that
determine supply chain
and program expense



Inputs to the Four-Step Fee
Methodology

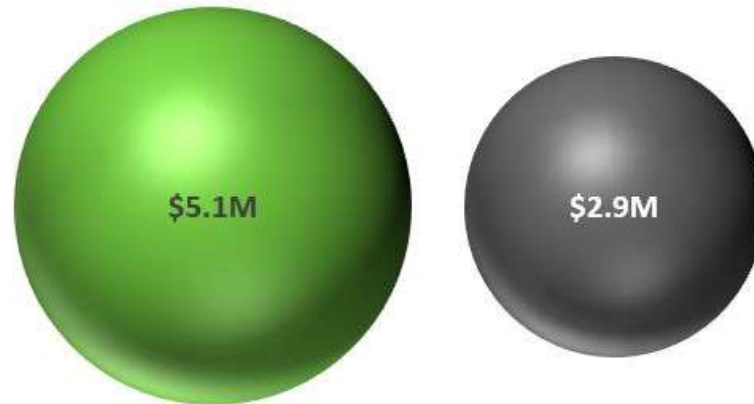
Budget Item	Step of Four-Step Fee Methodology responsible for allocating budget item
Gross Cost	Step 1
Commodity Revenue	Step 2
Program Management Costs	Step 3
Material Specific Investments	Step 4

Budgets and Commodities

- Collection and post-collection costs offset by commodity revenues
- 2018 China Ban has reduced prices for most materials
- Program impact varies: BC real time, others 3-year rolling average
- Markets for most materials stabilizing, with regional variations
- Increased contamination standards to sell materials increases costs

Commodities and Fee Rates

- MMSM rate for Aluminum Food and Beverage Cans
 - Significant change for highly recyclable and valuable material
- Program's commodity revenue decreased by 40%
- Accounts for 80% of AL can fee rate change



● 2020 ● 2021

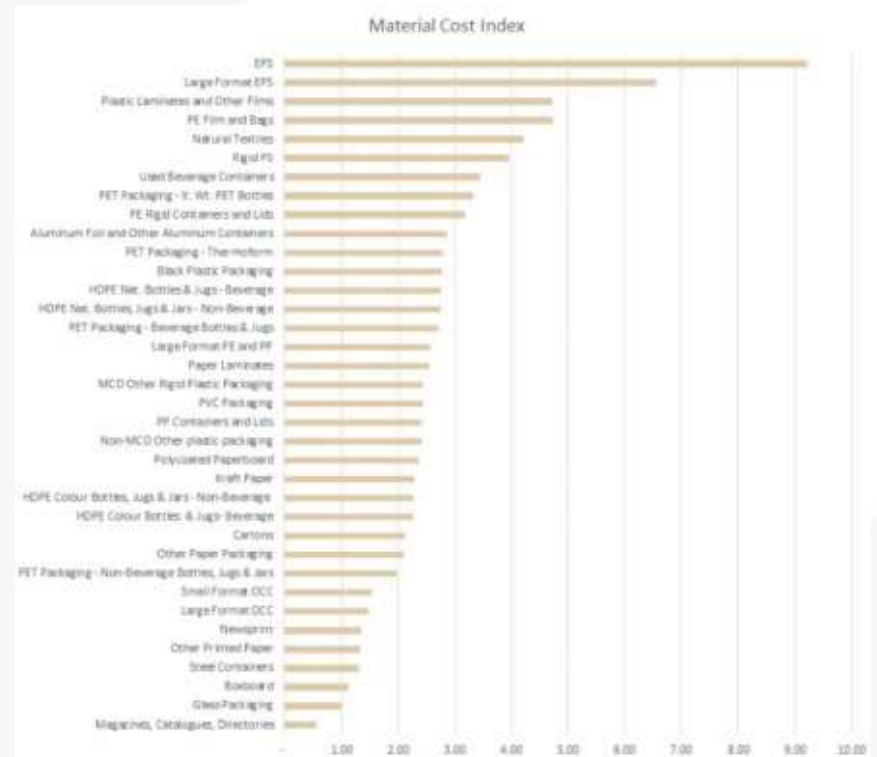
MCD Methodology

- Material Cost Differentiation (MCD) project guiding principles set July 2017
- MCD builds on work of Four-Step Fee Methodology
- New method for determining how materials impact the cost of the recycling system
- Addresses challenges of 15-year-old Activity Based Costing (ABC) model
- More reliable data
- Does NOT affect budgets



Material Cost Index

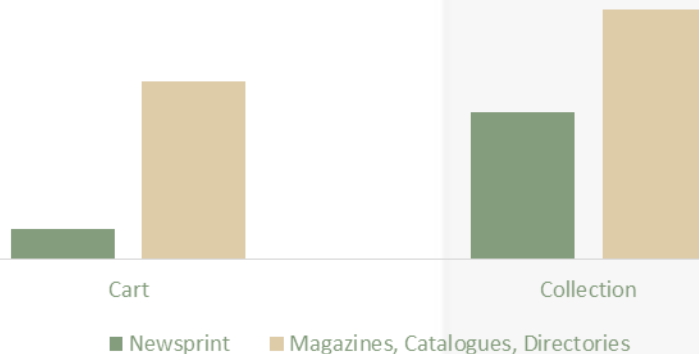
- MCD methodology produces Material Cost Index (MCI)
- MCI is used to allocate the budgeted Gross Cost of the recycling system in Step 1 of the Four-Step Fee Methodology
- Each material has an MCI value
- Low MCI does not mean low fee rate



MCI and Newsprint

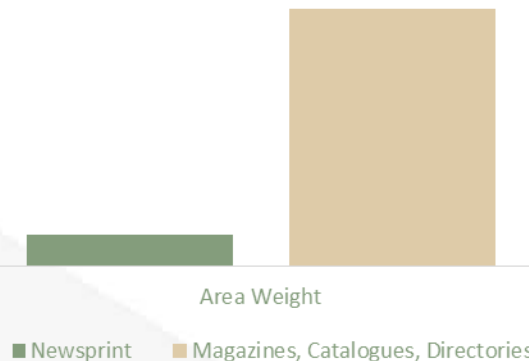
- Newsprint has a higher value on the MCI than Magazines

Newsprint vs. Magazines, Catalogues, Directories
Metric: Cart & Compacted Density



Measurement protocols allow us to measure density at various stages of the system

Newsprint vs. Magazines, Catalogues, Directories
Metric: Area Weight (kg/m²)



We can see just how much more weight of magazines can be sorted for the same area as compared to Newsprint

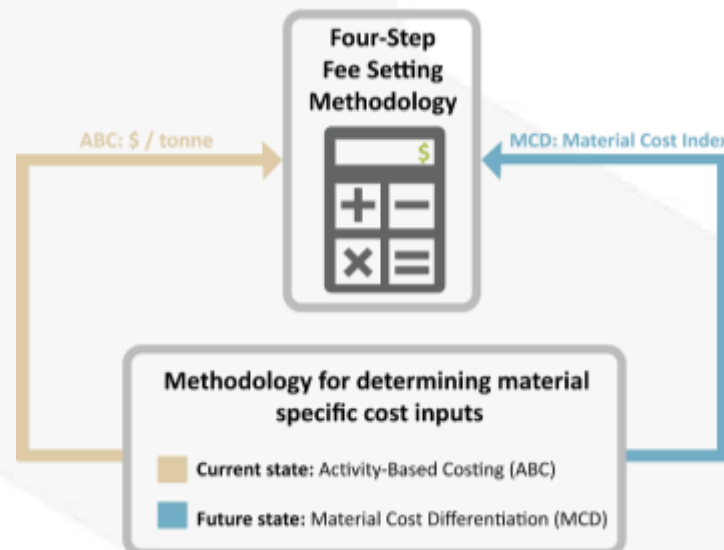
MCI and Aluminum Cans

- Ability to measure material under compaction is entirely new and has improved understanding of the impact on collection
- Engineered device to replicate compaction
 - Truck resources drive one-third of recycling system costs
- Aluminum can compaction not considered in ABC model
- Impact less significant than reduced commodity revenue



2021 Phased Implementation of MCI

- After June MCD consultations, program boards approved phased implementation for 2021
 - Stewardship Ontario requires RPRA approval
- 2021 fee rates calculated using 50% MCI and 50% ABC



Budget and Fee Rate Recap

- All programs have experienced significant reductions in commodity revenue
- Reduced revenue is impacting high-value materials as there is less revenue available to offset their gross cost
- The introduction of the Material Cost Index has impacted the fee rates for all materials in different ways but provides us with a repeatable and defensible new baseline understanding of cost impacts needed to ensure fair fee setting

2020 ANNUAL STEWARD MEETING

Tamara Burns, SVP Western Operations

OCTOBER 21, 2020



RECYCLEBCTM

UPDATES

- Maintaining services during COVID-19
- Launch of enhanced post-collection network with GFL Environmental Inc.
 - 38 facilities
 - Partnership focused on improved outcomes and value
- Amendments to Recycling Regulation
 - Milk containers move to deposit Feb 2022
 - Designation of single-use and packaging-like products in 2023

UPDATES

- Centre for Material Intelligence opened
 - Partnership with CSSA
 - Facility enables in-depth examination of material composition and characteristics
- Continued support and partnership with First Nations Recycling Initiative
- Began direct responsibility for curbside and multifamily collection in North Vancouver and West Vancouver

2019 PERFORMANCE

RECYCLE BC PERFORMANCE			
METRIC	RECYCLE BC 2019	RECYCLE BC 2018	YOY VARIANCE
RECYCLING PERFORMANCE			
Gross Tonnes Collected	207,411	206,778	0.3%
Net Tonnes Collected*	185,692	183,983	0.9%
Supplied Tonnes	237,582	235,655	0.8%
Recovery Rate*	78.2%	78.1%	0.1%
Provincial Recovery Target	75.0%	75.0%	0.0%
Population Served by PPP Program**	4,587,000	4,578,000	0.2%
Recovered kg per capita	40.5	40.2	0.7%
ACCESSIBILITY PERFORMANCE			
# Households Served**	1,854,681	1,850,000	0.3%
% Households with Access to PPP Program**	98.6%	98.3%	0.3%
P & E Cost per capita	\$0.57	\$0.58	-1.3%
% of residents aware and using recycling services	97%	95%	2.0%
COST PERFORMANCE			
Net Tonnes Collected*	185,692	183,983	0.9%
Net Cost	\$101,236,146	\$88,728,670	14.1%
Net Cost per Tonne	\$545	\$482	13.0%
Net Cost per Capita	\$22	\$19	13.9%

* Net tonnes collected and recovery rate reflect the exclusion of tonnes collected by Recycle BC on behalf of other stewardship programs for reporting in their annual reports

** Represents access to curbside, multifamily and/or depot service; 2018 household % restated



2021 BUDGET

RECYCLE BC BUDGET			
	2021	2020	YOY VARIANCE
OBLIGATION SHARE	100%	100%	
Supply Chain Costs	\$124,953,313	\$121,299,311	3.0%
Promotion & Education	\$2,000,000	\$2,620,000	-23.7%
Program Management	\$7,411,140	\$7,185,593	3.1%
Program Management as % of total fees	5.5%	5.9%	-0.4%
Total Costs (before surplus)	\$134,364,453	\$131,104,904	2.5%
Surplus Accumulation / (Drawdown)	\$ -	\$(10,000,000)	-100.0%
TOTAL FEE BUDGET	\$134,364,453	\$121,104,904	10.9%

2021 FEE SCHEDULE

RECYCLE BC FEE SCHEDULE (CENTS/KG)				
Category	Material	2021 Fee Rates (cents/ kg)	2020 Fee Rates (cents/ kg)	Variance %
PRINTED PAPER	Newsprint	29.00	16.00	81.3%
	Magazines and Catalogues	37.00	26.00	42.3%
	Telephone Books	37.00	26.00	42.3%
	Other Printed Paper	37.00	26.00	42.3%
PAPER PACKAGING	Corrugated Cardboard	43.00	36.00	19.4%
	Boxboard	43.00	36.00	19.4%
	Gable Top Cartons	72.00	83.00	-13.3%
	Paper Laminates	72.00	83.00	-13.3%
	Aseptic Containers	72.00	83.00	-13.3%
PLASTICS	PET Bottles	76.00	77.00	-1.3%
	HDPE Bottles	76.00	77.00	-1.3%
	Plastic Film	113.00	112.00	0.9%
	Plastic Laminates	140.00	141.00	-0.7%
	Polystyrene	113.00	112.00	0.9%
	Other Plastics	113.00	112.00	0.9%
STEEL	Other Steel Packaging	40.00	30.00	33.3%
	Steel Aerosols	40.00	30.00	33.3%
	Steel Paint Cans	40.00	30.00	33.3%
ALUMINUM	Aluminum Food & Milk Containers	61.00	56.00	8.9%
	Other Aluminum Packaging	61.00	56.00	8.9%
GLASS	Clear Glass	28.00	17.00	64.7%
	Coloured Glass	28.00	17.00	64.7%

2021 FLAT AND LOW-VOLUME FEES

RECYCLE BC LOW-VOLUME AND FLAT FEES			
TOTAL SUPPLIED (KG)	2021	2020	YOY VARIANCE
1,000 - 2,499	\$1,000	\$900	\$100 or 11%
2,500 - 5,000	\$2,300	\$2,100	\$200 or 10%
5,000 - 10,000	\$5,600	\$5,000	\$600 or 12%
10,000 - 15,000	\$9,400	\$8,500	\$900 or 11%

2020 Annual Steward Meeting

Tamara Burns,
SVP Western Operations



MMSW Update

- Cost study work to inform collector payment model
 - Requirement of Stewardship Plan
 - Participation of MMSW Advisory Committee
 - Two-year implementation of payment increase
- Collectors required to report GHG emissions from recycling operations
- Supporting collectors to reduce hazard and contamination from improper disposal of PPE

2019 Performance

MMSW PERFORMANCE			
METRIC	MMSW 2019	MMSW 2018	YOY VARIANCE
RECYCLING PERFORMANCE			
Collected Tonnes	41,945	42,352	-1.0%
Supplied Tonnes	54,209	60,427	-10.3%
Recovery Rate	77.4%	70.1%	7.3%
Population Serviced by PPP Program*	902,402	852,331	5.9%
Recovered kg per capita	46.5	49.7	-6.5%
ACCESSIBILITY PERFORMANCE			
# Households Serviced*	365,345	362,506	0.8%
% Households with Access to PPP Program*	84.4%	83.8%	0.6%
P & E Cost per capita	\$0.06	\$0.02	221.8%
COST PERFORMANCE			
Collected Tonnes	41,945	42,352	-1.0%
Net Cost	\$10,617,712	\$6,040,044	75.8%
Net Cost per Tonne	\$253	\$143	77.5%
Net Cost per Capita	\$12	\$7	66.0%

* Represents access to curbside, multifamily and/or depot services

2021 Budget

MMSW BUDGET			
	2021	2020	YOY VARIANCE
OBLIGATION SHARE	75%	75%	
Supply Chain Costs	\$11,810,693	\$9,730,389	21.4%
Promotion & Education	\$75,000	\$75,000	0.0%
Program Management	\$1,572,100	\$1,568,500	0.2%
Program Management as % of total fees*	11.7%	16.2%	-4.5%
Total Costs (before surplus)	\$13,457,793	\$11,373,889	18.3%
Surplus Accumulation / (Drawdown)	\$ -	\$ -	
Planned Surplus/Deficit	\$ -	\$(1,701,321)	-100.0%
TOTAL FEE BUDGET	\$13,457,793	\$9,672,568	39.1%

* 2020 program management cost was reported as a percentage of total costs (i.e. before planned deficit) in last year's report, 2020 Restated

2021 Fee Schedule

MMSW FEE SCHEDULE (CENTS/KG)				
Category	Material	2021 Fee Rates (cents/ kg)	2020 Fee Rates (cents/ kg)	Variance %
PRINTED PAPER	Newsprint	16.00	5.00	220.0%
	Magazines and Catalogues	16.00	5.00	220.0%
	Telephone Books	16.00	5.00	220.0%
	Other Printed Paper	16.00	5.00	220.0%
PAPER PACKAGING	Corrugated Cardboard	19.00	11.00	72.7%
	Boxboard	19.00	11.00	72.7%
	Gable Top Cartons	38.00	27.00	40.7%
	Paper Laminates	38.00	27.00	40.7%
	Aseptic Containers	38.00	27.00	40.7%
PLASTICS	PET Bottles	33.00	26.00	26.9%
	HDPE Bottles	33.00	26.00	26.9%
	Plastic Film	50.00	45.00	11.1%
	Plastic Laminates	60.00	61.00	-1.6%
	Polystyrene	50.00	45.00	11.1%
	Other Plastics	50.00	45.00	11.1%
STEEL	Other Steel Packaging	18.00	15.00	20.0%
	Steel Aerosols	18.00	15.00	20.0%
	Steel Paint Cans	18.00	15.00	20.0%
ALUMINUM	Aluminum Food & Other Containers	34.00	15.00	126.7%
	Other Aluminum Packaging	34.00	15.00	126.7%
GLASS	Clear Glass	10.00	5.00	100.0%
	Coloured Glass	10.00	5.00	100.0%

2021 Low-Volume Fees

MMSW LOW-VOLUME FEES			
TOTAL SUPPLIED	2021	2020	YOY VARIANCE
1,000 - 2,499	\$440	\$310	\$130 or 42%
2,500 - 5,000	\$920	\$650	\$270 or 42%

Annual Steward Meeting

October 21, 2020

Karen Melnychuk,
Executive Director



MMSM Update

- 10th Anniversary
- Partial in-office attendance resumed
- Recyclepedia launch
- Collaboration on accessibility in northern, remote and First Nations communities



Recycling Week Proclaimed in MB

- Third week in October going forward
- Aligns with Waste Reduction Week



2019 Performance

MMSM PERFORMANCE			
METRIC	MB 2019	MB 2018	YOY VARIANCE
RECYCLING PERFORMANCE			
Recovered Tonnes	68,232	75,900	-10.1%
Supplied Tonnes	85,001	88,532	-4.0%
Recovery Rate*	80.3%	77.2%	3.1%
Population Served by PPP Program	1,208,607	1,206,959	0.1%
Recovered kg per capita	56.5	62.9	-10.2%
ACCESSIBILITY PERFORMANCE			
# Households Served	512,457	516,289	-0.7%
% Households with Access to PPP Program	95%	94%	0.1%
P & E Cost per capita**	\$0.74	\$0.76	-1.8%
% of residents aware and using recycling services	93%	93%	0.0%
COST PERFORMANCE			
Recovered Tonnes	68,232	75,900	-10.1%
Net Cost***	\$37,642,703	\$36,371,598	3.5%
Net Cost per Tonne	\$552	\$479	15.1%
Net Cost per Capita	\$31	\$30	3.4%

* 2019 Recovery Rate is no longer a three-year average, but instead only one year of recovered tonnes divided by supplied tonnes

** Total Municipal and MMSM P&E

*** Net costs include 100% of municipal costs and 100% of commodity revenues. Also included are MMSM's Promotion & Education, regulatory, market development and all other program management costs.

2021 Budget

MMSM BUDGET			
	2021	2020	YOY VARIANCE
OBLIGATION SHARE	80%	80%	
Supply Chain Costs	\$22,228,453	\$20,763,059	7.1%
Promotion & Education	\$740,000	\$715,000	3.5%
Program Management	\$2,746,407	\$2,431,289	13.0%
Total Fee Obligation (before surplus)	\$25,714,860	\$23,909,348	7.6%
Program Management as % of Total Fees	10.7%	10.2%	0.5%
Surplus Accumulation / (Drawdown)	\$639,171	\$170,977	273.8%
TOTAL FEE BUDGET	\$26,354,031	\$24,080,325	9.4%

2021 Fee Schedule

MMSM FEE SCHEDULE (CENTS/KG)				
Category	Material	2021 Fee Rates (cents/ kg)	2020 Fee Rates (cents/ kg)	Variance %
PRINTED PAPER	Newsprint	19.60	10.29	90.5%
	Magazines and Catalogues	21.48	15.54	38.2%
	Telephone Books	22.81	16.91	34.9%
	Other Printed Paper	17.27	11.77	46.7%
PAPER PACKAGING	Corrugated Cardboard	30.31	31.78	-4.6%
	Boxboard	30.31	31.78	-4.6%
	Gable Top Cartons	54.99	71.39	-23.0%
	Paper Laminates	54.99	71.39	-23.0%
	Aseptic Containers	54.99	71.39	-23.0%
PLASTICS	PET Containers and Bottles	44.91	43.62	3.0%
	HDPE Containers and Bottles	45.96	52.25	-12.0%
	Plastic Film	60.02	51.30	17.0%
	Plastic Laminates	60.02	51.30	17.0%
	Polystyrene	60.02	51.30	17.0%
	Other Plastics	60.02	51.30	17.0%
STEEL	Steel Food & Beverage Cans	23.11	17.85	29.5%
	Steel Aerosols	23.11	17.85	29.5%
	Other Steel Containers	23.11	17.85	29.5%
ALUMINUM	Aluminum Food & Beverage Cans	21.18	-7.32	389.3%
	Other Aluminum Packaging	24.85	10.89	128.1%
GLASS	Clear Glass	11.51	5.00	130.1%
	Coloured Glass	11.51	5.00	130.1%

Flat Fee Consultation

- Potential 2022 introduction
- Feedback to be considered by MMSM Board
- **For information only** - Table illustrates flat fees based on 2021 data

TOTAL SUPPLIED (KG)	FLAT FEE
1,000 - 2,499	\$1,500
2,500 - 4,999	\$2,500



Thinking
beyond
the box

Stewardship Ontario

2020 Annual Steward Meeting

Lyle Clarke

October 21, 2020

Blue Box Program Transition

- August 2019 direction letter from MECP to transition to full producer responsibility
- Original timeline for Transition Plan extended due to COVID-19 disruption
- Consultations on Transition Plan in June
- Plan submitted to RPRA in August
- Approval by end of 2020; new regs released Monday
- Transition begins 2023, completed by end of 2025
- In the meantime...

2019 Performance



Stewardship Ontario

STEWARDSHIP ONTARIO PERFORMANCE			
METRIC	ONTARIO 2019	ONTARIO 2018	YOY VARIANCE
RECYCLING PERFORMANCE			
Recycled Tonnes	729,906	780,555	-6.5%
Generated Tonnes	1,274,310	1,296,207	-1.7%
Recycling Rate	57.3%	60.2%	-2.9%
Provincial Recycling Target	60.0%	60.0%	
Population Serviced by PPP Program	13,205,235	13,078,155	1.0%
Recycled kg per capita	55.3	59.7	-7.4%
ACCESSIBILITY PERFORMANCE			
# Households Serviced	5,333,161	5,278,332	1.0%
% Households with Access to PPP Program	94.0%	94.0%	0.0%
P & E Cost per capita*	\$0.62	\$0.61	1.7%
COST PERFORMANCE			
Recycled Tonnes	729,906	780,555	-6.5%
Net Cost**	\$336,293,874	\$299,307,268	12.4%
Net Cost per Tonne	\$461	\$383	20.2%
Net Cost per capita	\$25	\$23	11.3%

* Total municipal and SO P&E

** Net cost includes 100% of supply chain costs, commodity revenues, P&E, regulatory, market development and program management costs

2021 Budget

STEWARDSHIP ONTARIO BUDGET

	2021	2020	YOY VARIANCE
OBLIGATION SHARE	50%	50%	
Payments to Municipalities	\$146,692,000	\$126,031,000	16.4%
Program Management*	\$5,292,000	\$5,613,000	-5.7%
Promotion & Education	\$400,000	\$410,000	-2.4%
Regulatory	\$3,616,000	\$2,400,000	50.7%
Planned Surplus/(Deficit)	\$(7,389,000)	\$3,969,000	-286.2%
TOTAL STEWARD FEES	\$148,611,000	\$138,423,000	7.4%

* Includes program management, field studies, legal & audit fees, and research projects for 2020 where the approved amount was funded through reserve

2021 Fee Schedule *(RPRA approval required)*



Stewardship Ontario

STEWARDSHIP ONTARIO FEE SCHEDULE (CENTS/KG)				
Category	Material	2021 Fee Rates (cents/kg)	2020 Fee Rates (cents/kg)	Variance %
PRINTED PAPER	Newsprint - CNA/OCNA	0.69	0.63	9.2%
	Newsprint - Non-CNA/OCNA	11.95	6.90	73.2%
	Magazines and Catalogues	9.13	12.70	-28.1%
	Telephone Books	9.22	13.25	-30.5%
	Other Printed Paper	14.03	16.00	-12.3%
PAPER PACKAGING	Corrugated Cardboard	13.91	11.28	23.3%
	Boxboard	13.91	11.28	23.3%
	Gable Top Cartons	24.49	28.33	-13.6%
	Paper Laminates	24.49	28.33	-13.6%
	Aseptic Containers	24.49	28.33	-13.6%
PLASTICS	PET Bottles	20.08	17.39	15.5%
	HDPE Bottles	15.41	13.92	10.7%
	Plastic Film	31.13	36.67	-15.1%
	Plastic Laminates	31.81	36.67	-13.3%
	Polystyrene	31.21	36.67	-14.9%
	Other Plastics	31.94	36.67	-12.9%
STEEL	Steel Food & Beverage Cans	7.47	6.97	7.1%
	Steel Aerosols	7.47	6.97	7.1%
	Steel Paint Cans	7.47	6.97	7.1%
ALUMINUM	Aluminum Food & Beverage Cans	3.24	5.16	-37.2%
	Other Aluminum Packaging	15.22	13.32	14.3%
GLASS	Clear Glass	8.31	4.07	104.1%
	Coloured Glass	9.71	7.95	22.1%
IN-KIND	In-Kind Amount	\$5,356,510	\$4,860,588	10.2%



Questions?





Canadian Stewardship
Services Alliance

Thank You!

1-888-980-9549

or

info@cssalliance.ca

cssalliance.ca/2020asm

