



**Canadian Stewardship
Services Alliance**



Annual Steward Meeting

October 24, 2019





**Canadian Stewardship
Services Alliance**



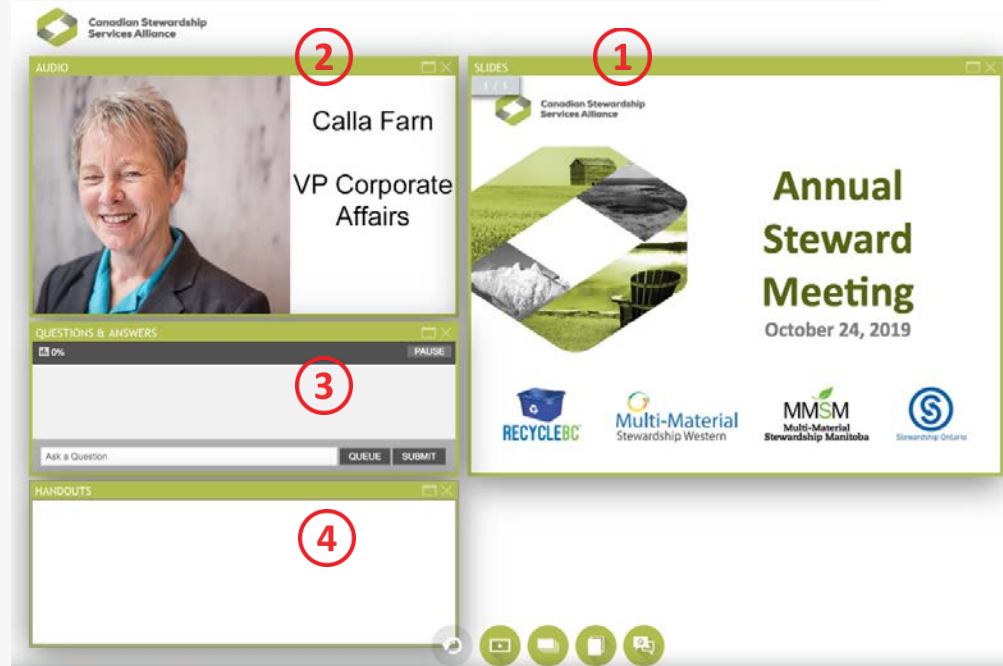
Welcome

**Calla Farn
Vice-President,
Corporate Affairs**



Webcast Information

- ① Main screen displays slides, videos and polls
- ② Current speaker is identified
- ③ Submit your questions
- ④ Direct links to documents and resources



Technical issues? Send a note in the Q&A box

Today's Agenda

- CSSA Outlook
- CSSA Updates
- Program Updates, 2020 Budget and Fee Schedules:
 - Recycle BC
 - Multi-Material Stewardship Western (MMSW)
 - Multi-Material Stewardship Manitoba (MMSM)
 - Stewardship Ontario
- Q&A
- Wrap-up



**Canadian Stewardship
Services Alliance**



CSSA Review & Outlook

**John Coyne,
Executive Chair**











NE ANN-
E'LL DO IT
NOW!

STAND
ON
ACT
NOW

PROTECT
OUR
PLANET

PLANET B

I SPE
FOR THE
TREES FOR
THE TREES
HAVE NO
TONGUES
- THE LORAX



Canadians throwing out up to \$150b worth of plastic a year: McKenna



New scheme to fight plastics pollution gains Government grant funding

The UK Government has re-opened the Darwin Plus scheme and given a grant for a plastic reduction project on St Helena to help support UK Overseas Territories.

Canadians should recycle 85% of plastics by 2025, environmental groups say

Dozens of environmental groups say if Canada wants to be a leader in getting the rest of the world to kick its plastics habit, it has to start by setting the bar for recycling plastics far higher at home. [Continue reading →](#)

All-women's voyage researches health impacts of ocean plastic pollution

By [MELANIE GREEN](#) StarMetro Vancouver
Mon., June 25, 2018

The world is facing a massive pile-up of plastic trash

Plastic waste is piling up around the globe after China stopped accepting nearly half of the world's shipments of recyclables. [Continue](#)

Canada reducing (but not banning) use of plastics at G7 in Quebec

By [Staff](#) The Canadian Press



paper

newsprint
404.226.4600
newsprint.ca/recycle

paper products
404.226.4600
newsprint.ca/recycle

paper products
404.226.4600
newsprint.ca/recycle

paper products
404.226.4600
newsprint.ca/recycle

paper products
404.226.4600
newsprint.ca/recycle



**Canadian Stewardship
Services Alliance**





OCEAN PLASTICS CHARTER

“EPR programs are recognized as one of the most effective mechanisms to support the creation of a circular economy. They improve recycling rates, reduce litter, and create the conditions to incent efficiency and reduce costs for end-of-life management.”

- Canada-wide Action Plan on Zero Plastic Waste



**Canadian Stewardship
Services Alliance**



RECYCLEBC™


Packaging and Paper Product Extended Producer Responsibility Plan

Revised June, 2019

Recycle BC's first 5-year stewardship plan can be found at https://recyclebc.ca/stewards/regulation_and_stewardship_plan/.



405-221 West Esplanade
North Vancouver, BC
RecycleBC.ca

A stylized map of Canada is shown in the background. The province of Ontario is highlighted in a solid green color, while the rest of the country is in a light gray. The map is positioned behind a white text box that contains the title and main text.

Renewing the Blue Box: Final report on the blue box mediation process

The Special Advisor on Recycling and Plastic Waste report outlines recommendations for transitioning the management of Ontario's Blue Box Program to producers of plastic and other packaging. The report, written by advisor David Lindsay, includes results from consultations with municipal and industry stakeholders and offers ways to improve recycling and increase the number of products that can be recycled, while making sure the program continues to be accessible and convenient.







**Canadian Stewardship
Services Alliance**





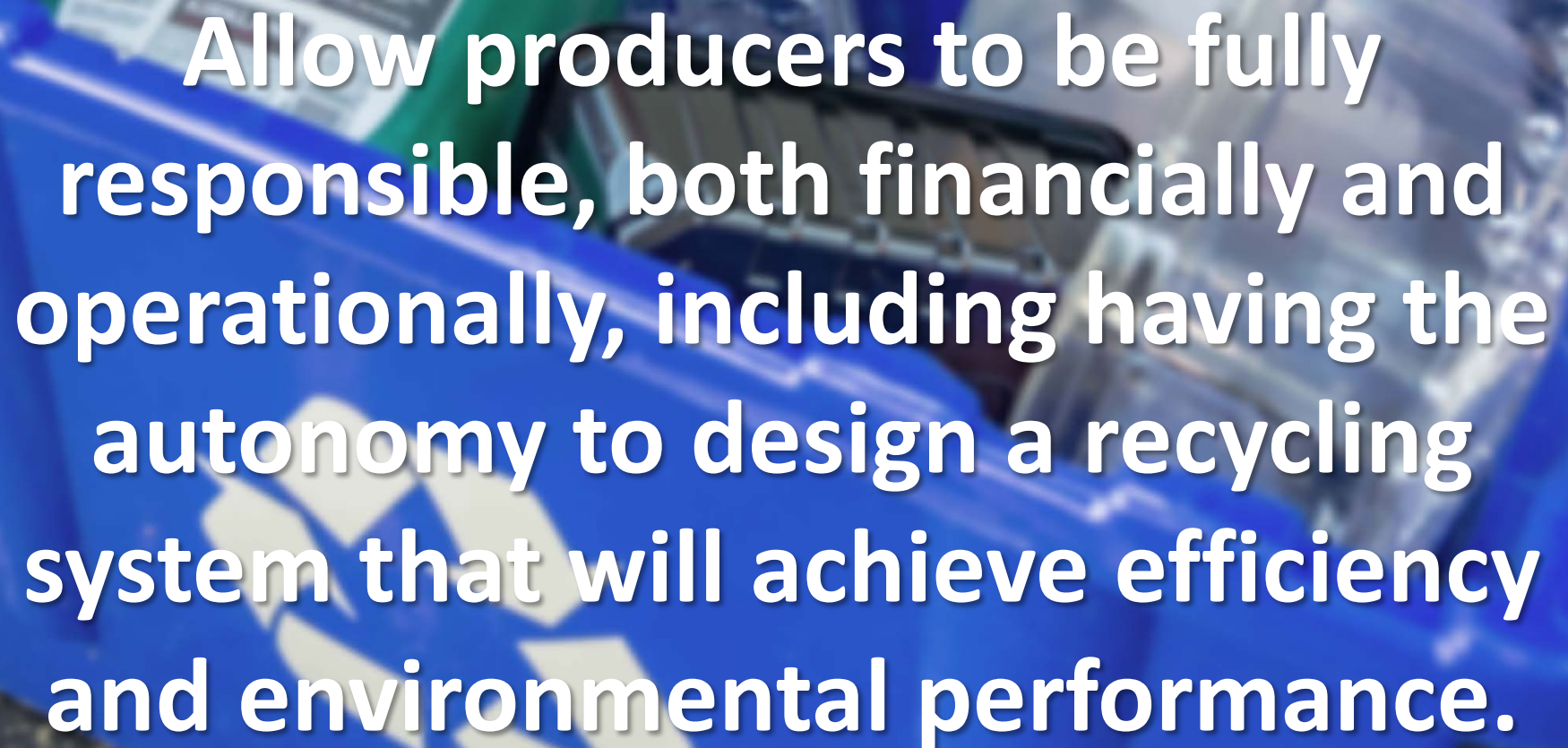
**Canadian Stewardship
Services Alliance**





**Canadian Stewardship
Services Alliance**



A blue recycling bin is shown, partially filled with various plastic bottles. A green bottle with a white label is visible on the left, and a white bottle with a yellow cap is on the right. The bin features a large white recycling symbol on its side. The background is a solid blue color.


Allow producers to be fully responsible, both financially and operationally, including having the autonomy to design a recycling system that will achieve efficiency and environmental performance.



Ensure recycling is easy and convenient for consumers with the same basket of goods collected everywhere.



**Ensure regulations are designed to
achieve a level playing field and
supported by appropriate
enforcement action against free-
riders.**



**Establish a reasonable de minimis
to ensure small businesses are not
unduly burdened.**



Make sure materials pay their own way in the recycling system with no cross subsidization.





CSSA Updates

- WeRecycle Portal
- Fee Rate Data File
- E-commerce Update
- Future of Fees



WeRecycle Portal

- Upgrade available in January for 2020 reporting

Material Quantities

2019 Report (2018 data, 2020 invoice)

Total weight: 16,000 kg

Material	Total All programs	MMSW 2018	MMSM 2018	SO 2018
Printed Paper				
Newspaper-CNA/OCNA Members	KG			
Other Newsprint-Non-CNA/OCNA Members	KG			
Newspapers	KG			
Newsprint (inserts and circulars)	KG			
Magazines	16,000	5,000	2,000	9,000
Catalogues	KG			
Directories	KG			
Other Printed Materials	KG			
Purchased Posters, Calendars, Greeting Cards and Envelopes	KG			





Fee Rate Data File

- Excel file available
- Program and National materials lists with 2020 rates

2020		Recycle BC		MMSW		MMSM		SO BB	
National Material List - Subcategory		Cents / KG		Cents / KG		Cents / KG		Cents / KG	
Printed Paper	Neurprint-CHMA/OCMA Numbers			Neurprint	5.00	Neurprint	10.25	Neurprint-CHMA/OCMA Numbers	6.42
	Other Neurprint-Non-CHMA/OCMA Numbers			Neurprint (secure and circular)	5.00	Neurprint	10.25	Other Neurprint-Non-CHMA/OCMA Numbers	6.40
	Neurprint			Neurprint (secure and circular)	16.00	Neurprint	10.25		
	Neurprint (secure and circular)			Neurprint	16.00	Neurprint	10.25		
	Pressboard			Pressboard	5.00	Pressboard and Cardstock	15.70	Pressboard and Cardstock	15.70
	Cardstock			Cardstock	5.00	Pressboard and Cardstock	15.70	Pressboard and Cardstock	15.70
	Other			Other	5.00	Other	15.70	Other	15.70
	Paper for General Use			Paper for General Use	5.00	Other Printed Materials	16.00		
	Purchase & Purchase, Calendar, Greeting Card and Envelope			Purchase & Purchase, Calendar, Greeting Card and Envelope	5.00				
	Other Printed Materials			Other Printed Materials	5.00				
Paper Packaging	Gable Top Container - Beverage - Milk and PMB Substitutes			Gable Top Container - Beverage - Milk and PMB Substitutes	27.00	Gable Top Container - Beverage	17.20	Gable Top Container	20.22
	Gable Top Container - Beverage - Milk and PMB Substitutes			Gable Top Container - Beverage - Milk and PMB Substitutes	27.00	Gable Top Container - Beverage	17.20	Gable Top Container	20.22
	Gable Top Container - Beverage - Non-Alcoholic			Gable Top Container - Beverage - Non-Alcoholic	27.00	Gable Top Container - Beverage	17.20	Gable Top Container	20.22
	Gable Top Container - Beverage - Non-Alcoholic			Gable Top Container - Beverage - Non-Alcoholic	27.00	Gable Top Container - Beverage	17.20	Gable Top Container	20.22
	Gable Top Container - Beverage - Milk and PMB Substitutes			Gable Top Container - Beverage - Milk and PMB Substitutes	27.00	Gable Top Container - Beverage	17.20	Gable Top Container	20.22
	Acrylic Container - Beverage - Milk and PMB Substitutes			Acrylic Container - Beverage - Milk and PMB Substitutes	27.00	Acrylic Container - Beverage	17.20	Acrylic Container	20.22
	Acrylic Container - Beverage - Non-Alcoholic			Acrylic Container - Beverage - Non-Alcoholic	27.00	Acrylic Container - Beverage	17.20	Acrylic Container	20.22
	Acrylic Container - Beverage - Non-Alcoholic			Acrylic Container - Beverage - Non-Alcoholic	27.00	Acrylic Container - Beverage	17.20	Acrylic Container	20.22
	Paper Laminator			Paper Laminator	27.00	Paper Laminator	17.20	Paper Laminator	20.22
	Craft Paper Bag (Point of Sale)			Craft Paper Bag (Point of Sale)	11.00	Corrugated Cardboard	11.20	Corrugated Cardboard	11.20
Plastic Packaging	PET Bottle and Jar - 5 Liter - Beverage - Milk and PMB Substitutes			PET Bottle and Jar - 5 Liter - Beverage - Milk and PMB Substitutes	26.00	PET Bottle - 5 Liter - Beverage	43.42	PET Bottle - 5 Liter	17.20
	PET Bottle and Jar - 5 Liter - Beverage - Milk and PMB Substitutes			PET Bottle and Jar - 5 Liter - Beverage - Milk and PMB Substitutes	26.00	PET Bottle - 5 Liter - Beverage	43.42	PET Bottle - 5 Liter	17.20
	PET Bottle and Jar - 5 Liter - Beverage - Non-Alcoholic			PET Bottle and Jar - 5 Liter - Beverage - Non-Alcoholic	26.00	PET Bottle - 5 Liter - Beverage	43.42	PET Bottle - 5 Liter	17.20
	PET Bottle and Jar - 5 Liter - Beverage - Non-Alcoholic			PET Bottle and Jar - 5 Liter - Beverage - Non-Alcoholic	26.00	PET Bottle - 5 Liter - Beverage	43.42	PET Bottle - 5 Liter	17.20
	PET Bottle and Jar - 5 Liter - Beverage - Milk and PMB Substitutes			PET Bottle and Jar - 5 Liter - Beverage - Milk and PMB Substitutes	26.00	PET Bottle - 5 Liter - Beverage	43.42	PET Bottle - 5 Liter	17.20
	HDPE Bottle and Jar - 5 Liter - Beverage - Milk and PMB Substitutes			HDPE Bottle and Jar - 5 Liter - Beverage - Milk and PMB Substitutes	26.00	HDPE Bottle and Jar - 5 Liter - Beverage	52.25	HDPE Bottle and Jar - 5 Liter	19.20
	HDPE Bottle and Jar - 5 Liter - Beverage - Milk and PMB Substitutes			HDPE Bottle and Jar - 5 Liter - Beverage - Milk and PMB Substitutes	26.00	HDPE Bottle and Jar - 5 Liter - Beverage	52.25	HDPE Bottle and Jar - 5 Liter	19.20
	HDPE Bottle and Jar - 5 Liter - Beverage - Non-Alcoholic			HDPE Bottle and Jar - 5 Liter - Beverage - Non-Alcoholic	26.00	HDPE Bottle and Jar - 5 Liter - Beverage	52.25	HDPE Bottle and Jar - 5 Liter	19.20
	HDPE Bottle and Jar - 5 Liter - Beverage - Non-Alcoholic			HDPE Bottle and Jar - 5 Liter - Beverage - Non-Alcoholic	26.00	HDPE Bottle and Jar - 5 Liter - Beverage	52.25	HDPE Bottle and Jar - 5 Liter	19.20
	HDPE Bottle and Jar - 5 Liter - Beverage - Milk and PMB Substitutes			HDPE Bottle and Jar - 5 Liter - Beverage - Milk and PMB Substitutes	26.00	HDPE Bottle and Jar - 5 Liter - Beverage	52.25	HDPE Bottle and Jar - 5 Liter	19.20

E-commerce Update

- Growing volume of material from “non-resident” e-commerce retailers
- Project to consider potential regulatory/compliance solutions
- Research to understand scope/impact of problem
 - **Phase 1:** Global review of EPR strategies/tactics
 - **Phase 2:** Develop Canadian data and gather perspectives
 - **Phase 3:** Produce preliminary recommendations and draft policy options

E-commerce Update

- Online sales increasing 10% annually; forecast to be more than 25% of total retail by 2025
- Cross-border sales into Canada estimated at 34% of online, but likely higher
- US and EU collecting taxes and enforcing safety standards; packaging EPR not a priority
- Enforcement of EPR obligations on cross border sellers not practical; tag on to GST/HST?



Fee Setting Process

Budget

- Supply Chain Management cost + Program Management cost

Fees

- Allocates the program Budget to each material category using the approved Fee Methodology, creating a Fee for each material category

Fee Rates

- Divides the material category fees by the total quantities supplied by stewards in that category to produce a Fee Rate

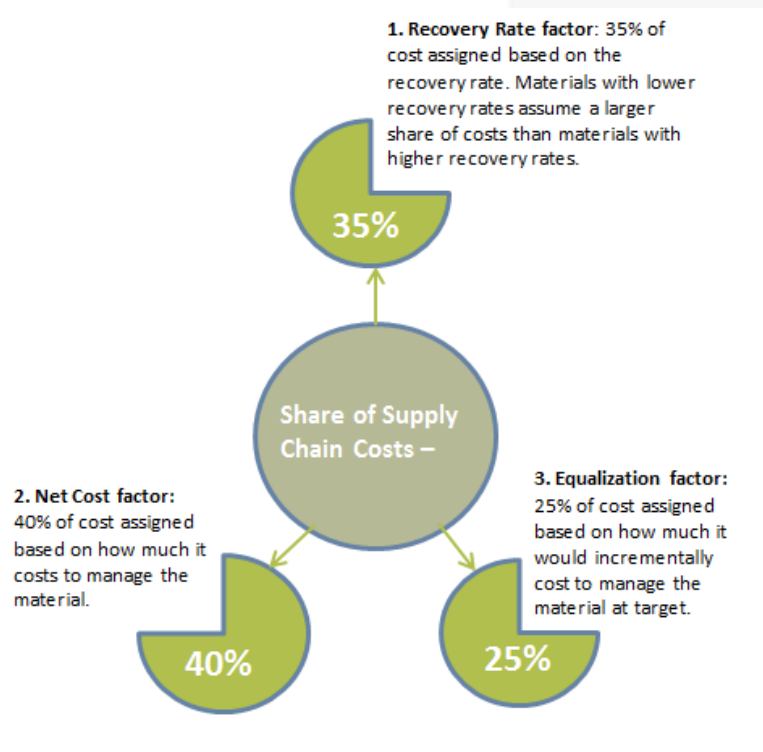
Program Budgets

- Steward share of system costs range from 50% to 100%
- BC and SK: commercial contracts with service providers
- MB and ON: verified eligible municipal costs



Material Fees

Three-factor formula: ON



Four-step method: BC, SK, MB

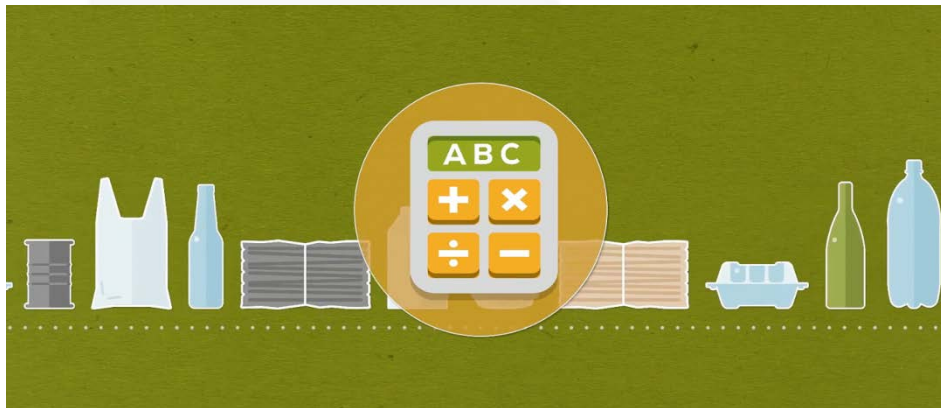


Fee Rates

- Material Fee \$ ÷ Supplied Tonnes = ¢/kg
- Fee Rate can increase if Fee is stable or less than previous year... if fewer supplied tonnes
- Comparisons across programs difficult or impossible

From ABC to MCD

- Activity Based Costing (ABC) methodology provides a key input to setting a material's fee -- each material's unique gross cost per tonne
 - Weight, volume and density are main factors
 - Regular data updates



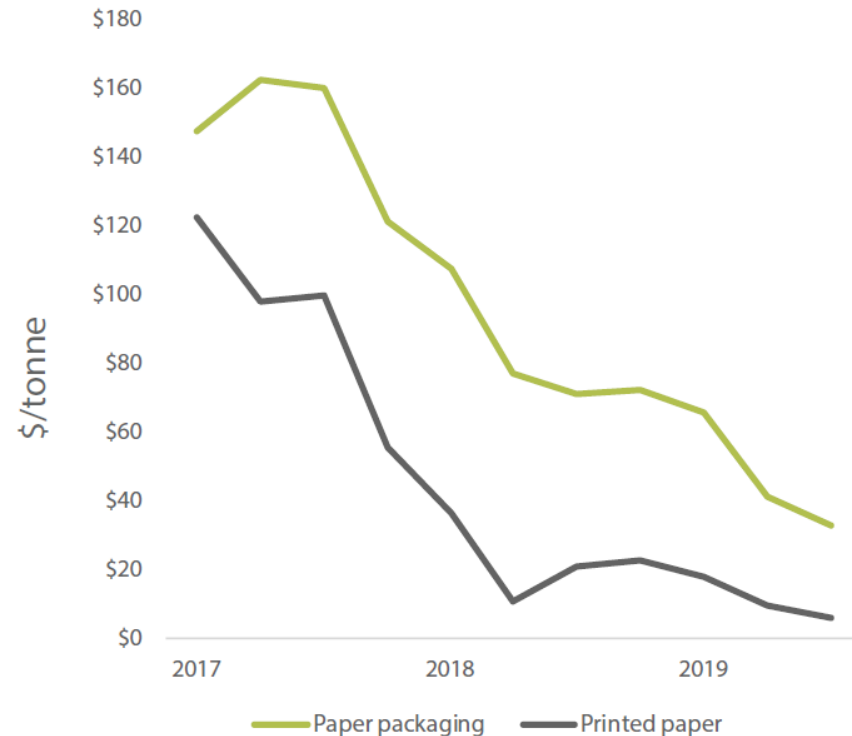
From ABC to MCD

- Material Cost Differentiation (MCD) project guiding principles communicated in July 2017
 - Background and updates on CSSA website
 - Consultations expected to begin in early 2020
- Numerous, changing inputs to setting fee rates



Declining Commodity Revenue

- Printed paper and paper packaging are >70% of total supplied tonnes
 - Prices down 85% since 2017
 - China Ban took effect January 2018
- Decreased revenue affects all program budgets
 - BC real time, others 3-year rolling average
 - Impact on fee rates varies



2019 ANNUAL STEWARD MEETING

Tamara Burns, SVP Western Operations

OCTOBER 24, 2019



RECYCLEBCTM

PROGRAM PLAN UPDATE

- Revised Program Plan approved in June
 - Extensive stakeholder consultations
 - Five year plan
 - Performance and reporting enhancements
 - Material specific recovery rates in 2018 AR
 - GHG from collection/processing in 2020
 - Compostable PPP
 - Expanded accessibility, First Nations Recycling Initiative, streetscape collection
-

UPDATES

- One million tonnes collected!
- Single-use plastics submission
- Service expansions

2018 PERFORMANCE

RECYCLE BC PERFORMANCE			
METRIC	BC 2018	BC 2017	YOY VARIANCE
RECYCLING PERFORMANCE			
Gross Tonnes Collected	206,778	197,949	4.5%
Net Tonnes Collected*	183,983	174,942	5.2%
Supplied Tonnes	235,655	234,847	0.3%
Recovery Rate*	78.1%	74.5%	4.8%
Provincial Recovery Target	75.0%	75.0%	0.0%
Population Served by PPP Program**	4,578,000	4,566,371	0.3%
Recovered kg Per Capita	40.2	38.3	4.9%
ACCESSIBILITY PERFORMANCE			
# Households Served**	1,850,000	1,846,097	0.2%
% Households with Access to PPP Program**	98.5%	98.2%	0.3%
P & E Cost Per Capita	\$0.58	\$0.54	7.7%
% of residents aware and using recycling services	95%	99%	-4.0%
COST PERFORMANCE			
Net Cost	\$88,728,670	\$72,513,159	22.4%
Net Cost per Tonne	\$482	\$414	16.3%
Net Cost Per Capita	\$19	\$16	22.1%

* Net tonnes collected and recovery rate reflect the exclusion of tonnes collected by Recycle BC on behalf of other stewardship programs for reporting in their annual reports

** Represents access to curbside, multi-family and/or depot services



2020 BUDGET

RECYCLE BC BUDGET			
	2020	2019	YOY VARIANCE
OBLIGATION SHARE	100%	100%	
Supply Chain Costs	\$121,299,311	\$94,158,890	28.8%
Promotion & Education	\$2,620,000	\$2,101,000	24.7%
Program Management	\$7,185,593	\$6,890,015	4.3%
Program Management as % of total fees	5.9%	7.0%	-15.5%
Total Costs	\$131,104,904	\$103,149,905	27.1%
Surplus Accumulation / (Drawdown)	\$(10,000,000)	\$(5,000,000)	100.0%
TOTAL FEE BUDGET	\$121,104,904	\$98,149,905	23.4%

2020 FEE SCHEDULE

RECYCLE BC FEE SCHEDULE (CENTS/KG)				
Category	Material	2020 Fee Rates (cents/ kg)	2019 Fee Rates (cents/ kg)	Variance %
PRINTED PAPER	Newsprint	16.00	11.00	45.5%
	Magazines and Catalogues	26.00	14.00	85.7%
	Telephone Books	26.00	14.00	85.7%
	Other Printed Paper	26.00	14.00	85.7%
PAPER PACKAGING	Corrugated Cardboard	36.00	25.00	44.0%
	Boxboard	36.00	25.00	44.0%
	Gable Top Cartons	83.00	55.00	50.9%
	Paper Laminates	83.00	55.00	50.9%
	Aseptic Containers	83.00	55.00	50.9%
PLASTICS	PET Containers	77.00	63.00	22.2%
	HDPE Containers	77.00	63.00	22.2%
	Plastic Film	112.00	100.00	12.0%
	Plastic Laminates	141.00	128.00	10.2%
	Polystyrene	112.00	100.00	12.0%
	Other Plastics	112.00	100.00	12.0%
STEEL	Other Steel Packaging	30.00	27.00	11.1%
	Steel Aerosols	30.00	27.00	11.1%
	Steel Paint Cans	30.00	27.00	11.1%
ALUMINUM	Aluminum Food & Milk Containers	56.00	42.00	33.3%
	Other Aluminum Packaging	56.00	42.00	33.3%
GLASS	Clear Glass	17.00	16.00	6.3%
	Coloured Glass	17.00	16.00	6.3%

2020 FLAT AND LOW-VOLUME FEES

RECYCLE BC LOW-VOLUME AND FLAT FEES			
TOTAL SUPPLIED (KG)	2020	2019	YOY VARIANCE
1,000 to 2,499 kg	\$900	\$700	\$200 or 29%
2,500 to 4,999 kg	\$2,100	\$1,700	\$400 or 24%
5,000 to 9,999 kg	\$5,000	\$4,000	\$1,000 or 25%
10,000 to 15,000 kg	\$8,500	\$6,800	\$1,700 or 25%

2019 Annual Steward Meeting

Tamara Burns,
SVP Western Operations



MMSW Update

- New collector payment model
- Required to determine Saskatchewan-specific supply-chain costs
- Guided by MMSW Advisory Committee
- Effective January 1, 2019
- Increased per household payments to collectors as well as payments to depot operators
- Further studies in 2019-2020
- 2021 fee rates expected to increase based on anticipated increases to the collector payment model.

2018 Performance

MMSW PERFORMANCE			
METRIC	MMSW 2018	MMSW 2017	YOY VARIANCE
RECYCLING PERFORMANCE			
Collected Tonnes	42,352	41,254	2.7%
Supplied Tonnes	60,427	56,629	6.7%
Recovery Rate	70.1%	72.8%	-3.8%
Population Serviced by PPP Program*	852,331	846,804	0.7%
Recovered kg Per Capita	49.7	48.7	2.0%
ACCESSIBILITY PERFORMANCE			
# Households Serviced*	362,506	357,976	1.3%
% Households with Access to PPP Program*	83.8%**	82.7%	1.3%
P & E Cost Per Capita	\$0.02	\$0.03	-35.5%
COST PERFORMANCE			
Net Cost	\$6,040,044	\$5,770,209	4.7%
Net Cost Per Tonne	143	\$140	2.0%
Net Cost Per Capita	\$7	\$7	4.0%

* Represents access to curbside, multifamily and/or depot services

** Restated from 2018 Annual Report

2020 Budget

MMSW BUDGET			
	2020	2019	YOY VARIANCE
OBLIGATION SHARE	75%	75%	
Supply Chain Costs	\$9,730,389	\$9,618,504	1.2%
Promotion & Education	\$75,000	\$75,000	0.0%
Program Management	\$1,568,500	\$1,444,800	8.6%
Program Management as % of total fees	13.8%	14.3%	-3.2%
Total Costs	\$11,373,889	\$11,138,304	2.1%
Surplus Accumulation / (Drawdown)	--	\$(1,000,000)	-100.0%
Planned Surplus/Deficit	\$(1,701,321)	--	--
TOTAL FEE BUDGET	\$9,672,568	\$10,138,304	-4.6%

2020 Fee Schedule

MMSW FEE SCHEDULE (CENTS/KG)				
Category	Material	2020 Fee Rates (cents/ kg)	2019 Fee Rates (cents/ kg)	Variance %
PRINTED PAPER	Newsprint	5.00	5.00	0
	Magazines and Catalogues	5.00	5.00	0
	Telephone Books	5.00	5.00	0
	Other Printed Paper	5.00	5.00	0
PAPER PACKAGING	Corrugated Cardboard	11.00	11.00	0
	Boxboard	11.00	11.00	0
	Gable Top Cartons	27.00	27.00	0
	Paper Laminates	27.00	27.00	0
	Aseptic Containers	27.00	27.00	0
PLASTICS	PET Bottles	26.00	26.00	0
	HDPE Bottles	26.00	26.00	0
	Plastic Film	45.00	45.00	0
	Plastic Laminates	61.00	61.00	0
	Polystyrene	45.00	45.00	0
	Other Plastics	45.00	45.00	0
STEEL	Other Steel Packaging	15.00	15.00	0
	Steel Aerosols	15.00	15.00	0
	Steel Paint Cans	15.00	15.00	0
ALUMINUM	Aluminum Food & Other Containers	15.00	15.00	0
	Other Aluminum Packaging	15.00	15.00	0
GLASS	Clear Glass	5.00	5.00	0
	Coloured Glass	5.00	5.00	0

Annual Steward Meeting

October 24, 2019

Karen Melnychuk,
Executive Director


MMSM
**Multi-Material
Stewardship Manitoba**
INDUSTRY FUNDING RECYCLING



MMSM Update

- 2018 Program Plan approval conditions
 - Newspaper obligation
 - Delivery of recycling access in northern communities, First Nations
- Consultations on elimination of single-use plastic bags
- Canada Fibers' Winnipeg MRF operational

Promotion & Education

- Public awareness campaigns
- First Nations and northern communities
- School Programs
- Plastic bag campaigns

2018 Performance

MMSM PERFORMANCE			
METRIC	MB 2018	MB 2017	YOY VARIANCE
RECYCLING PERFORMANCE			
Recovered Tonnes	75,900	77,675	-2.3%
Supplied Tonnes	88,532	91,988	-3.8%
Recovery Rate*	77.2%	70.6%	9.4%
Population Serviced by PPP Program	1,206,959	1,206,492	0.0%
Recovered kg Per Capita	62.9	64.4	-2.3%
ACCESSIBILITY PERFORMANCE			
# Households Serviced	516,289	517,701	-0.3%
% Households with Access to PPP Program	94%	94%	0.0%
P & E Cost Per Capita**	\$0.76	\$0.77	-1.9%
% of residents aware and using recycling services	93%	95%	-2.1%
COST PERFORMANCE			
Net Cost***	\$36,371,598	\$26,508,659	37.2%
Net Cost Per Tonne	\$479	\$341	40.4%
Net Cost Per Capita	\$30	\$22	37.2%

* Recovery Rate is the 3-year average of the generation based recovery rate presented in the 2018 fee model and the supply based recovery rates presented in the 2019 and 2020 fee models.

** Total Municipal and MMSM P&E costs.

*** Net costs include 100% of municipal costs and 100% of commodity revenues. Also included are MMSM's Promotion & Education, regulatory, market development and all other program management costs.

2020 Budget

MMSM BUDGET			
	2020	2019	YOY VARIANCE
OBLIGATION SHARE	80%	80%	
Share of Supply Chain Costs	\$20,763,059	\$17,425,991	19.1%
Promotion & Education	\$715,000	\$645,000	10.9%
Research & Market Development	--	\$5,000	-100.0%
Program Management	\$2,431,289	\$2,408,378	1.0%
Total Fee Obligation (before surplus)	\$23,909,348	\$20,484,369	16.7%
Program Management as % of Total Fees	10.2%	11.8%	-13.5%
Surplus Accumulation / (Drawdown)	\$170,977	\$360,779	-52.6%
TOTAL FEE BUDGET	\$24,080,325	\$20,845,148	15.5%

2020 Fee Schedule

MMSM FEE SCHEDULE (CENTS/KG)				
Category	Material	2020 Fee Rates (cents/ kg)	2019 Fee Rates (cents/ kg)	Variance %
PRINTED PAPER	Newsprint	10.29	7.16	43.7%
	Magazines and Catalogues	15.54	10.84	43.4%
	Telephone Books	16.91	11.25	50.3%
	Other Printed Paper	11.77	8.46	39.1%
PAPER PACKAGING	Corrugated Cardboard	31.78	26.33	20.7%
	Boxboard	31.78	26.33	20.7%
	Gable Top Cartons	71.39	64.28	11.1%
	Paper Laminates	71.39	64.28	11.1%
	Aseptic Containers	71.39	64.28	11.1%
PLASTICS	PET Bottles	43.62	36.87	18.3%
	HDPE Bottles	52.25	32.00	63.3%
	Plastic Film	51.30	48.38	6.0%
	Plastic Laminates	51.30	48.38	6.0%
	Polystyrene	51.30	48.38	6.0%
	Other Plastics	51.30	48.38	6.0%
STEEL	Steel Food & Beverage Cans	17.85	16.16	10.5%
	Steel Aerosols	17.85	16.16	10.5%
	Other Steel Containers	17.85	16.16	10.5%
ALUMINUM	Aluminum Food & Beverage Cans	-7.32	-38.07	80.8%
	Other Aluminum Packaging	10.89	9.10	19.7%
GLASS	Clear Glass	5.00	6.35	-21.3%
	Coloured Glass	5.00	6.35	-21.3%



Thinking
beyond
the box

Stewardship Ontario

2019 Annual Steward Meeting

David Pearce
October 24, 2019

Blue Box Program Wind Up

- August direction letter from MECP to transition to full producer responsibility
- Submit wind up plan to RPRA by June 30, 2020
- Guiding principles for development of plan
- Remove potential CSSA conflicts
- RPRA approval end of 2020
- Transition begins 2023, completed by end of 2025

2018 Performance



Stewardship Ontario

STEWARDSHIP ONTARIO PERFORMANCE			
METRIC	ONTARIO 2018	ONTARIO 2017	YOY VARIANCE
RECYCLING PERFORMANCE			
Recycled Tonnes	780,555	822,979	-5.2%
Generated Tonnes	1,296,207	1,342,017	-3.4%
Recycling Rate	60.2%	61.3%	-1.8%
Provincial Recycling Target	60.0%	60.0%	
Population Served by PPP Program	13,078,155	12,962,740	0.9%
Recycled kg Per Capita	59.7	63.5*	-6.0%
ACCESSIBILITY PERFORMANCE			
# Households Served	5,278,332	5,237,905	0.8%
% Households with Access to PPP Program	94.0%	94.4%	-0.4%
P & E Cost Per Capita**	\$0.61	\$0.56	8.9%
COST PERFORMANCE			
Net Cost***	\$299,307,268	\$249,809,925	19.8%
Net Cost Per Tonne	\$383	\$304	26.3%
Net Cost Per Capita	\$23	\$19	19.7%

* Restated

** Total municipal and SO P&E

*** Net cost includes supply chain costs, commodity revenues, P&E, regulatory, market development and program management costs

2020 Budget

STEWARDSHIP ONTARIO BUDGET

	2020	2019	YOY VARIANCE
OBLIGATION SHARE	50%	50%	
Supply Chain Costs*	\$131,028,681	\$122,059,642	7.3%
Promotion & Education and Market Development	\$ 410,000	\$510,000	-19.6%
Program Management	\$4,538,094	\$4,296,471	5.6%
Regulatory	\$2,400,000	\$2,400,000	0.0%
TOTAL FEE BUDGET	\$138,376,775	\$129,266,113	7.0%

* These costs include the municipal obligation and other internal material management costs, without the value of newspaper in-kind. The value of newspaper in-kind is referenced at the bottom of the fee schedule in the next table.

2020 Fee Schedule



Stewardship Ontario

STEWARDSHIP ONTARIO FEE SCHEDULE (CENTS/KG)				
Category	Material	2020 Fee Rates (cents/ kg)	2019 Fee Rates (cents/ kg)	Variance %
PRINTED PAPER	Newsprint - CNA/OCNA	0.63	0.59	6.8%
	Newsprint - Non-CNA/OCNA	6.90	5.98	15.4%
	Magazines and Catalogues	12.70	9.04	40.5%
	Telephone Books	13.25	11.06	19.8%
	Other Printed Paper	16.00	18.45	-13.3%
PAPER PACKAGING	Corrugated Cardboard	11.28	10.13	11.4%
	Boxboard	11.28	10.13	11.4%
	Gable Top Cartons	28.33	22.44	26.2%
	Paper Laminates	28.33	22.44	26.2%
	Aseptic Containers	28.33	22.44	26.2%
PLASTICS	PET Bottles	17.39	19.65	-11.5%
	HDPE Bottles	13.92	13.21	5.4%
	Plastic Film	36.67	33.07	10.9%
	Plastic Laminates	36.67	33.07	10.9%
	Polystyrene	36.67	33.07	10.9%
	Other Plastics	36.67	33.07	10.9%
STEEL	Steel Food & Beverage Cans	6.97	7.10	-1.8%
	Steel Aerosols	6.97	7.10	-1.8%
	Steel Paint Cans	6.97	7.10	-1.8%
ALUMINUM	Aluminum Food & Beverage Cans	5.16	3.68	40.2%
	Other Aluminum Packaging	13.32	7.96	67.3%
GLASS	Clear Glass	4.07	3.80	7.1%
	Coloured Glass	7.95	6.76	17.6%
IN-KIND	In-Kind Amount	\$4,860,588	\$5,112,007	-4.9%

Fee Rate Outlook

- Commodity revenue
- Evolving tonne
- Environmental performance
- Program changes
- Making a difference...



Questions?





**Canadian Stewardship
Services Alliance**



Thank you!

1-888-980-9549

or

info@cssalliance.ca

