



**Canadian Stewardship
Services Alliance**

Ready to Report

Webinar for New Stewards and Reporters

2018 Packaging and Printed Paper Reports

Calla Farn, VP Steward Relations

February 28, 2018



**Canadian Stewardship
Services Alliance**

Welcome

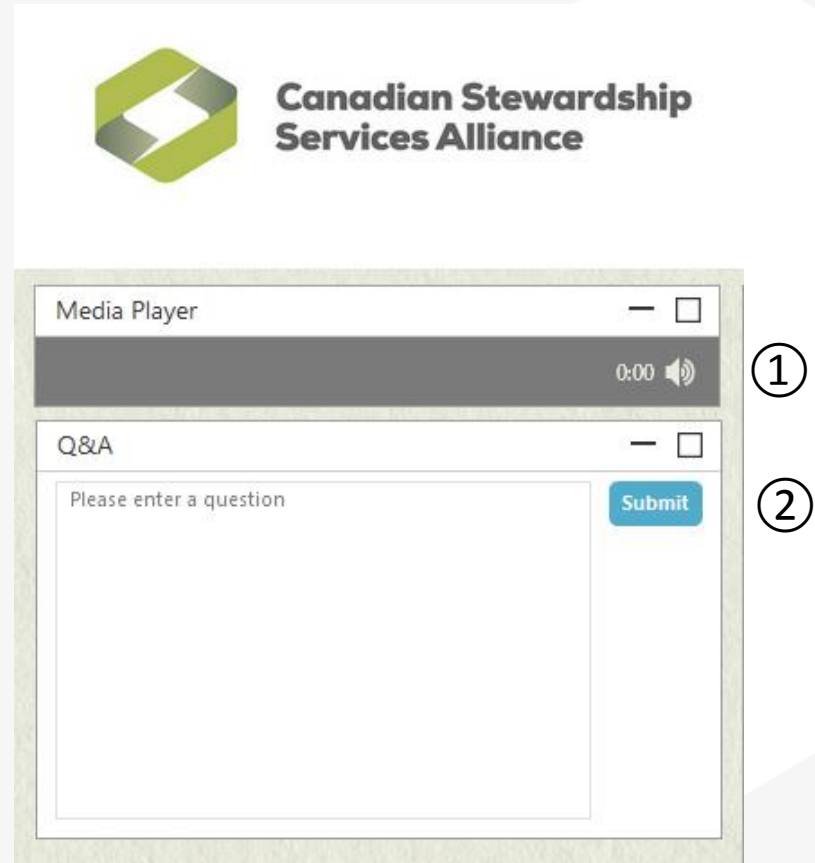
- Outline PPP reporting basics
- Resources available to stewards
- Poll questions
- Presentation available at www.cssalliance.ca





Webcast Information

- Speaker advances slides
- Volume control ①
- “Ask a Question” ②
 - Type & click ‘submit’
- Technical issues? Use “Ask A Question”
- Poll slides





Agenda

1. Reporting Resources
2. Steward Obligation
3. Materials and Data Preparation
4. WeRecycle Portal
5. Report Submission and Validation
6. Questions & Answers




Online Tutorial

Menu
Notes

- 1. Stewardship Reporting
- 2. Learning Objectives
- 3. Module Navigation
- 4. Section 1: Determining If You ...
- 5. What is Stewardship?
- 6. The Legislative Framework
- 7. Determining if your Organizati...
- 8. What Is a Resident?
- 9. Designated Materials
- 10. Who is responsible? Brand ...
- 11. Voluntary Stewards
- 12. What Obligations do Steward...
- 13. Exemptions
- 14. Section 2: Steward Reporting...
- 15. The Accuracy of Reporting
- 16. Reporting and Payment Cycle
- 17. Data That Can Be Excluded
- 18. Section 3: Step-by-Step Guid...
- 19. Step One: Confirm Scope
- 20. Step Two: Select a Methodol...
- 21. Specific Identification Method
- 22. Average Bill of Materials Met...
- 23. Step Three: Obtain Informati...
- 24. Step Four: Determine Materia...
- 25. Determining the Weight of O...
- 26. Recording the Information
- 27. Step Five: Calculate the Total...
- 28. Step Six: Identify Additional ...
- 29. Summary Sheet
- 30. WeRecycle Portal
- 31. Step Seven: Maintain Integrity
- 32. Additional Resources
- 33. Final Quiz

Stewardship Reporting



**Canadian Stewardship
Services Alliance**

⏮
▶

↺
< PREV
NEXT >



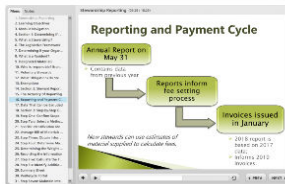
Reporting Resources

2018 Reporting Resources

Stewards registered with Recycle BC, MMSW, MMSM and Stewardship Ontario are required to submit reports on the [WeRecycle Portal](#) by **May 31** for the packaging and printed paper (PPP) supplied in each province. A range of resources are available below to assist and guide stewards in collecting and accurately reporting their PPP data.

National Steward Services is ready to help with any questions: stewards@cssalliance.ca or 1-888-980-9549.

Reporting Overview Tutorial



This online learning tool summarizes the key elements of stewardship reporting in less than 20 minutes. A great place to start for new stewards and a useful review for more experienced reporters.

2018 Guidebook for Stewards



The Guidebook is a definitive source for steward information. The new version includes updated details about being a steward, preparing reports and national material lists.

- ▶ What's new this year
- ▶ Ready to Report Webinars and Checklist
- ▶ Using the WeRecycle Portal
- ▶ Steward Lists
- ▶ Material Guidance

- What's new this year
- Webinars and Checklist
- WeRecycle Portal
- Steward Lists
- Material Guidance

www.cssalliance.ca/2018reporting

National Steward Services: 1-888-980-9549 or stewards@cssalliance.ca



Voluntary Stewards and Steward Lists

- Voluntary stewards are non-resident in a province and have assumed responsibility for reporting and paying stewardship fees for their PPP
- Steward Lists make it easier for retailers and other first importers to understand which suppliers' products to include or exclude from their reports
- Lists for each program are posted on CSSA and all program websites

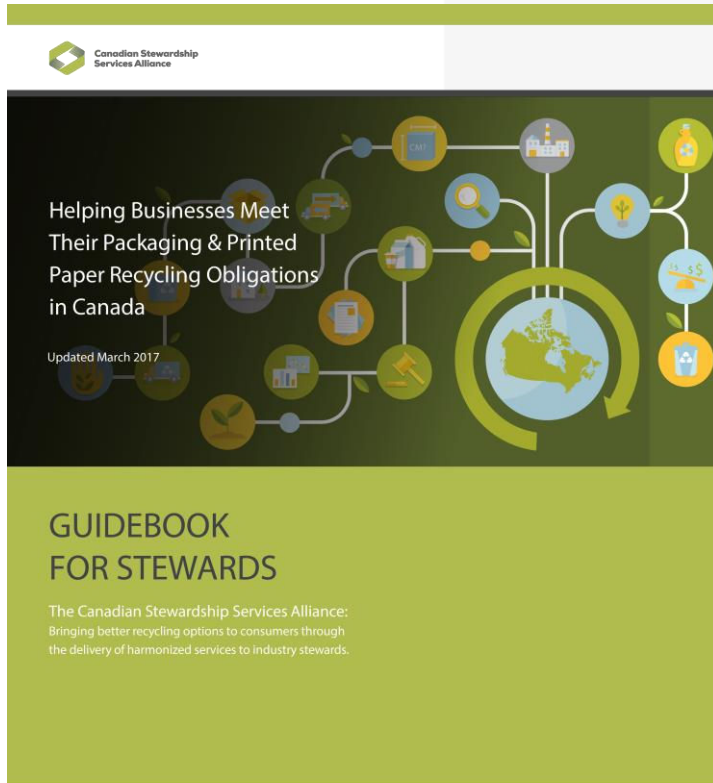


Guidebook For Stewards

Part Two - Reporting

Seven keys steps:

1. Identify scope
2. Select a methodology
3. Obtain sales data
4. Determine the weight of obligated materials
5. Calculate total kilograms
6. Identify any additional materials
7. Maintain reporting process and data





Canadian Stewardship
Services Alliance

Understand your Obligation

- Which program(s)?
- Obligation years?
- Exemptions?



Canadian Stewardship
Services Alliance



- Home
- Program Registration
- ☐ Maintain Information
- ▾ ☐ Steward Reporting
 - Complete Report
 - View Report

Welcome Michael Terry | Steward# 1000002

Program Type

Obligation

Preferences

Enter Data

Methodology

Brands & Affiliates

Submit Report



Obligation Years

- Obligation to pay begins from day you start to supply PPP in a province
- Penalty & Interest Policy applies for late reports
- Estimates of PPP may be needed

EXAMPLE: New Steward that began operations on June 1, 2017

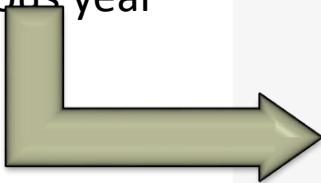
	Invoice	Report	Data	Due
1 st	2017	2016	Jun-Dec 2017	Oct 1, 2017
2 nd	2018	2017	Jun-Dec 2017 Extrapolated	Oct 1, 2017
3 rd	2019	2018	Jun-Dec 2017 Extrapolated	May 31, 2018
4 th	2020	2019	2018	May 31, 2019



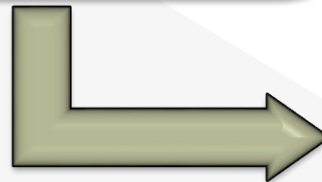
Reporting and Invoice Cycle

Annual Report by
May 31

- Contains data from previous year



Reports inform fee
setting process



Invoices issued
in January

- 2018 report is based on 2017 data;
- Informs 2019 invoices.



Exemptions and Small Business

	Recycle BC	MMSW	MMSM	Stewardship Ontario
Gross Annual Revenue	<\$1 Million	<\$2 Million	<\$750,000	<\$2 Million
Tonnage	<1,000kg	< 1,000kg	No exemption	No exemption
Other Exemptions	Single point of retail	Single point of retail	No exemption	No exemption
Flat Fees Available	Yes	Yes	No	No

BC and SK: Online Assessment Tool makes it simple to determine eligibility to pay a flat fee



Materials Overview

- Report only designated PPP supplied to consumers
- Exclusions: IC&I, Transportation/Distribution, Durable
- PPP material categories and sub-categories:
 - Printed Paper
 - Packaging: Paper, Plastic, Steel, Aluminum, Glass
- Determine weights and materials for all supplied products
 - Components
 - Methodologies
- Tip Sheets





Data Preparation

- Set up spreadsheet(s)
- Obtain sales data
- Calculate total weights for each material category

Per Product					Total				
Product	Other Printed Paper (kg)	Plastic – PET (kg)	Glass – Clear (kg)	Steel – Cans (kg)	SALES QUANTITY	Other Printed Paper (kg)	Plastic – PET (kg)	Glass – Clear (kg)	Steel – Cans (kg)
Product A	--	0.01	0.2	---	1,000	--	10.0	200.0	--
Product B	0.03	0.05	--	0.1	5,000	150.0	250.0	--	500.0
					TOTAL	150.0	260.0	200.0	500.0



WeRecycle Portal


- Enable pop-ups for your browser and ensure language is English
- Automatic log out after 30 minutes of inactivity
- Answered all obligation questions and confirmed 'Obligated'
- Use the 'Save' button when entering data, methodology, or brands
- Complete each box of the Methodology section
- CBCRA section for Manitoba beverage stewards






Portal User Guide

Portal User Guide

Welcome to the
WeRecycle Portal

 Automotive
Materials
Stewardship   MSM
Multi-Material
Stewardship Manitoba

 Multi-Material
Stewardship Western  MULTI
MATERIAL
BC

 Canadian Stewardship
Services Alliance

New Here? [Register Now...](#)

User ID *

Password *

Request Password Reset: [Get Support...](#)

WeRecycle Registration and Reporting Portal





Report Completed!



- Home
- Program Registration
- Maintain Information
- Steward Reporting
 - Complete Report
 - View Report
 - Print Report
- Steward Invoice
- Steward Search
- Special Reports

Welcome Michael

Steward# 1000002

Program Type

Obligation

Preferences

Enter Data

Methodology

Brands & Affiliates

Submit Report

◀ Previous

Submit

Submit Steward's Report

There are only a few more steps before finalizing your report

- Review the [Terms and Conditions](#) below and tick the box to signify your agreement.
- Press the **Submit** button to finalize your Steward's Report.
- Please note, invoices will not be populated with fees until fee setting has been completed.

Declaration For 2018

Company: Steward

Name:

Steward No.: 1000002

Title: Senior Steward Services Specialist

Please record and retain your Steward No.

Description of Obligation	Total Fee
2018 Report (2017 data, 2019 invoice)	\$ 0.00

Terms and Conditions

By clicking on the button below, you confirm the following:

- You are either the Primary Contact for your company or are the authorized agent for the Steward that you are reporting on behalf of.
- You have read the program rules and/or have uploaded your signed membership agreement.
- The information and data contained in your report and any uploaded documents are complete and accurate.
- Where applicable, your deduction declaration form will be provided within 60 days of the report submission deadline and you will provide documentation to support your deductions upon request.
- You understand and agree that your company must retain supporting documentation for five years from submission date and that your report may be subject to audit.

☐ Please click the box to confirm



Report Validation

- All reports are reviewed to ensure they have been filed correctly – vital to have accurate data for invoices and fee setting
- Validation process begins with submitted report
- Common issues include:
 - Updates to brands and methodology.
 - Explanation of material tonnage variances $\pm 20\%$



**Canadian Stewardship
Services Alliance**

National Steward Services

Contact NSS:

***1-888-980-9549 or
stewards@cssalliance.ca***



**Canadian Stewardship
Services Alliance**

Q&A

Reporting deadline is May 31
Webinar presentation available online



**Canadian Stewardship
Services Alliance**

Thank You!

www.cssalliance.ca

1-888-980-9549

stewards@cssalliance.ca